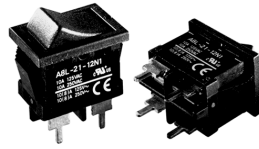
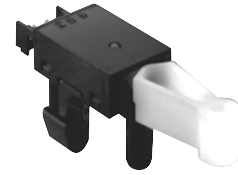


SPECIAL PURPOSE



page 241



page 245

MODEL	A8L	D2X
Description	Miniature Rocker Switch Withstands inrush currents up to 100 A. Contact gap of 3 mm minimum.	Special-purpose Detection Switch High contact force and wiping action for greater contact reliability.
Contact Form	SPST, DPST	SPST-NC
Service Life Mechanical Electrical	50,000 ops. min. 10,000 ops. min.	1,000,000 ops. min. (OT: full stroke) 50,000 ops. min. (at rated load)
Mounting Pitch	—	Refer to drawings under "MOUNTING" in "DIMENSIONS" section of datasheet
Type of Actuator	Rocker	Bi-directional paddle
Terminal Choices	Quick connect/Solder, PCB (straight, right angled, left angled)	Crimp connector (Dipole type)
Approved Standards	UL, cUL	—
Contact Ratings Resistive Load	10 A, 125 VAC or 250 VAC	0.1 A, 30 VDC
Operating Force (OF)*	SPST: 220 ±120 gf DPST: 400 ±250 gf	50 g

*Note: These values are for pin plunger type only



page 247



page 251

D3C

Low-torque Detection Switch
 Built-in slide mechanism for selecting shorting or non-shorting timing of switch.

SPDT (Refer to "SWITCHING TIMING" section in datasheet)

50,000 ops. min. (at rated switch frequency)
 50,000 ops. min. (at rated switch frequency)

5.7 x 4.7 mm (0.22 x 0.19 in)

Hinge lever

PCB

—

0.1 A, 30 VDC
 40 g or 130 g (hinge lever only)

D3K

Special-purpose Detection Switch
 Detects cards and paper sheets with a 3 gram operating force.

SPST-NO

2,000,000 ops. min. (at rated operating frequency)
 2,000,000 ops. min. (at rated operating frequency)

Refer to drawings under "MOUNTING" in "DIMENSIONS" section of datasheet

Paddle lever

Connector (Dipole type)

—

10 mA, 12 VAC
 3 g

NOTE: DIMENSIONS ARE SHOWN IN MILLIMETERS. To convert millimeters to inches divide by 25.4.

OMRON

OMRON ELECTRONICS LLC.

One East Commerce Drive
Schaumburg, IL 60173

1-800-55-OMRON

OMRON ON-LINE

Global - <http://www.omron.com>
USA - <http://www.omron.com/oei>
Canada - <http://www.omron.com/oci>

OMRON CANADA, INC.

885 Milner Avenue
Scarborough, Ontario M1B 5V8
416-286-6465